



**2023 ANNUAL REPORT**  
**Ottawa County Parks & Recreation Commission**  
**October 1, 2022 - September 30, 2023**





# From the Director

The Ottawa County Parks and Recreation Commission is dedicated to providing residents and visitors alike with a wide range of recreational opportunities, while preserving and protecting the county's most sensitive natural resources. The following executive summary for the 2023 Annual Report provides highlights of our efforts to improve recreational opportunities, connect our community to the wonders of nature, and prepare for what lies ahead.

## Project Highlights:

**Observatory:** A grand opening celebrated West Michigan's first public observatory located at Hemlock Crossing. The observatory has enriched our community through monthly astronomy programming and public observation viewing nights.

**Idema Explorers Trail:** Two newly completed sections of the Idema Explorers Trail were commemorated with major public events. A ribbon cutting ceremony at the Jenison Mill Segment celebrated the opening of the trail and the installation of the Secchia Gateway Arch. This segment signifies the linkage between Ottawa and Kent County, and connects Ottawa County to a vast network of trails spanning over 100 miles in Kent County. The Grand Explorers Trail Race in June showcased the scenic Bill Idema Nature Moraine Segment between Grand Ravines and Grand River Park.

**Grand Ravines Treehouse:** The treehouse overlook at Grand Ravines was completed in spring of 2023, providing visitors with a serene space to appreciate the encompassing canopy and stunning views of the deep ravines.

**Parks for All Pilot:** Over 800 4th graders from the Allendale, Coopersville, Grand Haven, and Spring Lake school districts were provided with curriculum-based programming as part of a pilot project to remove barriers to outdoor education for the County's elementary students.

**Staffing Realignment** - Several organizational changes were implemented in 2023. The Natural Resources Manager position was upgraded to Coordinator of Natural Resources Management with the goal of enhancing our conservation and natural resource initiatives. Our community engagement team was reorganized to include two Program Supervisors and a Communications Specialist in an effort to broaden our outreach to the local community and schools. A Coordinator of Fund Development and Major Gifts was also hired through a grant funded by the Ottawa County Parks Foundation. This role aims to secure long-term philanthropic support to ensure financial stability and sustainability for the Ottawa County Parks and Recreation Commission.

**Looking Ahead** - Exciting projects are on the horizon. The Idema Explorers Camp is anticipated to welcome guests for overnight stays by late 2024. Access improvements and ecological enhancements are also underway at Ottawa Sands, with efforts expected to continue through 2024. The expansion of two parks, Bend Area and Rosy Mound Natural Area, will be a focal point in 2024, laying the foundation for future regional development and conservation efforts. Lastly, we look forward to our strategic planning process to discover what will drive future priorities and initiatives of the parks system.



*Jason D. Shamblin*  
 Jason D. Shamblin, Director  
 Ottawa County Parks & Recreation

## Our Mission

The Ottawa County Parks & Recreation Commission enhances quality of life for residents and visitors by preserving parks and open spaces and providing outdoor and natural resource-based recreation and education experiences.



Photos taken by @lydiaelizabeth

## Table of Contents

Parks at a Glance	3
Lake Michigan Coastal Greenway	4-6
Grand River Greenway	7
Natural Resources	8-9
Special Events	10
Community Engagement	11-12
Maintenance & Operations	13
Supporting Organizations	14
Revenue & Expenses	15
Parks Commission & Staff	16
Property Data	17

# At-a-Glance

7,400  
ACRES

29\*  
COUNTY PARKS

13  
OPEN SPACES

150+  
MILES OF TRAIL

\*The Ottawa County Parks and Recreation Commission was contracted in 2023 to manage the daily operations and management of Kouw Park and Windsnest Park. The property is owned/overseen by Port Sheldon Township. See page 17 for a listing of all lands administered by the Parks Commission.



## Living in Ottawa County

Ottawa County is home to a diverse natural resource base that competes with any other county in the Midwest. Our picturesque Lake Michigan shoreline, sand dunes, waterways, wetlands, bayous, and woodlands collectively create a truly unique environment in Ottawa County. These abundant resources offer ample opportunities for various outdoor recreational activities.

Ottawa County continues to be the fastest growing county in the state, which is a reflection of the area's natural allure, diverse economy, and other indicators of a high quality of life.

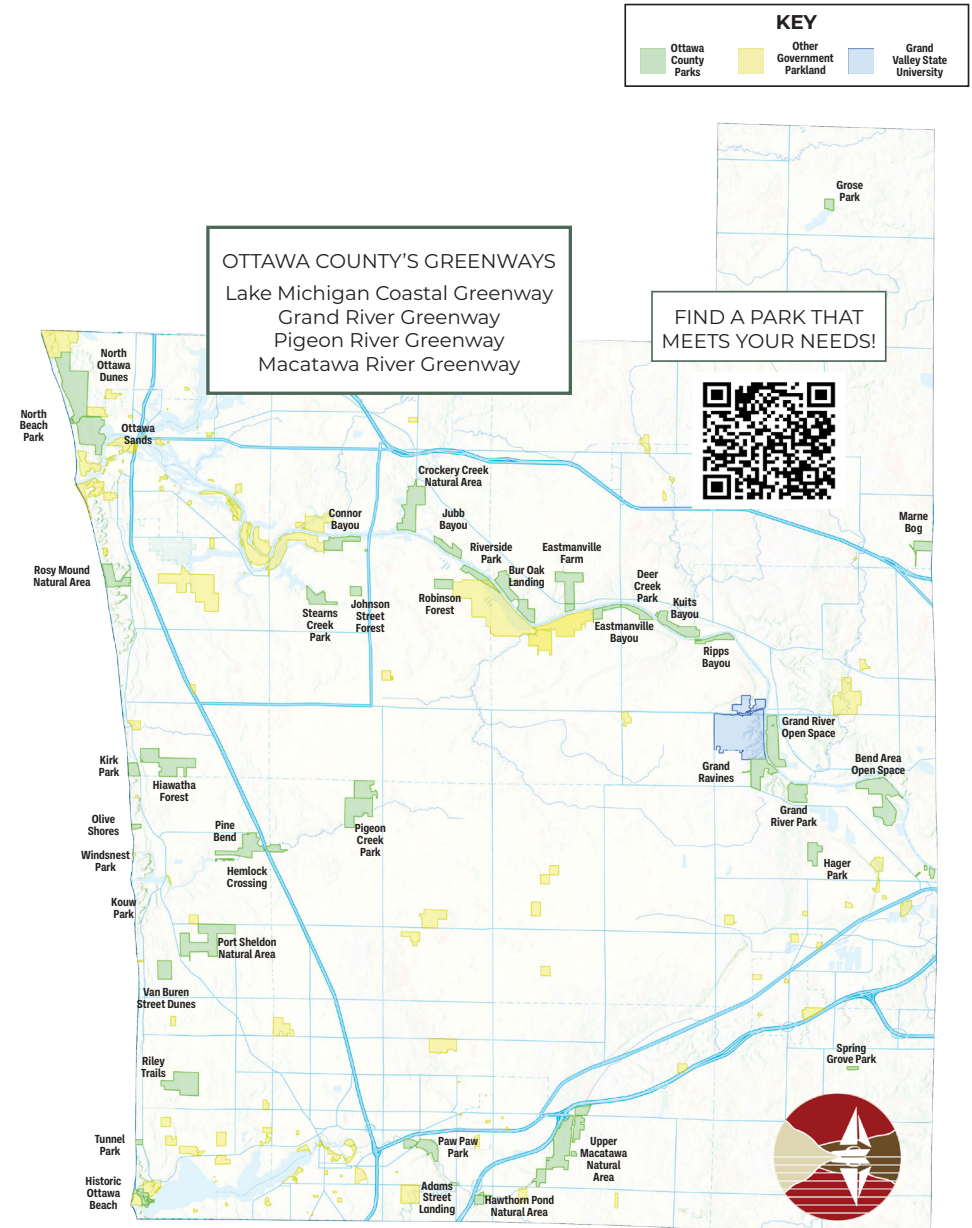
## Greenways in Ottawa County

There are four greenways in Ottawa County, each unique in its own way:

- Grand River Greenway
- Lake Michigan Coastal Greenway
- Macatawa River Greenway
- Pigeon River Greenway

## What is a Greenway?

A greenway is a connected and ecologically related corridor of park or protected green space near an urban area, set aside for recreational use or environmental protection.





# Lake Michigan Greenway

## Ottawa Sands Master Plan

At the confluence of the Grand River and Lake Michigan, work is underway on access improvements and ecological enhancements at Ottawa Sands. These projects are expected to continue through 2024 as part of a nearly \$8 million effort to implement the Ottawa Sands Master Plan.

[news.miottawa.org/ottawasands](https://news.miottawa.org/ottawasands)



## Idema Explorers Camp

Thanks to a generous \$3.48 million donation from the Bill and Bea Idema Foundation, construction has commenced on the Idema Explorers Camp at Ottawa Sands. The camp will consist of three treehouses, five yurts, and ten tent pads. This donation was leveraged to secure additional funding which will allow for improved public access, construction of a welcome center and a Grand River kayak launch, and key infrastructure improvements.



Idema Explorers Camp restroom



Treehouse being constructed

## Ecological Restoration

While undeniably a beautiful aesthetic experience, 188 acres of the park have been significantly disturbed by the previous sand mining operations and are not functioning properly as habitat, including the manmade mined lake.

In collaboration with Audubon Great Lakes and the Michigan Department of Natural Resources, with funding from the Sustain Our Great Lakes program, the design phase for ecological improvements has commenced. The implementation of these enhancements, such as wetland creation and restoration, is scheduled to begin in early 2024.



Woody debris will be used along 3,300' of lake shoreline to improve habitat for aquatic ecosystems and stabilize shoreline.

**“The ecological restoration at Ottawa Sands will include the creation of six acres of interdunal wetland to the south of the mined lake. This will improve habitat at the park and also increase the capacity of the area for stormwater storage.”**

– Nealy Molhoek, Coordinator of Natural Resources Management



# Lake Michigan Greenway

## Improving Accessibility

Ottawa County Parks was recommended for a Michigan Natural Resources Trust Fund grant and a Land and Water Conservation Fund grant for two complementary projects to establish a day-use area at the northeast corner of the Ottawa Sands lake and to construct an accessible pathway around the lake. Construction is underway on portions of the project. Project highlights include the following:

### Day-use Area and Lake Loop

- Parking area with ADA spaces and modern restroom
- Paved 1.6-mile Lake Loop trail
- Scenic views of lake
- Accessible benches

### Other Access Improvements

- The entryway and access drive will be reconfigured, paved, and turned into a boulevard with an expanded connection to North Shore Drive.
- Paved non-motorized pathway from North Shore Drive to the lake loop
- Paved access drive from North Shore Drive to Idema Explorers Camp
- Vehicle parking and bicycle loops
- Universally accessible kayak launch at the Sag with access to Grand River



Paved access drive from North Shore Drive to Idema Explorers Camp



View of the Sag from the kayak launch



Overhead view of Idema Explorers Camp parking



Reconfigured entryway to Ottawa Sands



# Lake Michigan Greenway

## Kirk Park Upgrades

Significant upgrades are coming to Kirk Park thanks to a Michigan Natural Resources Trust Fund grant.

The project involves renovating the current restroom to make it accessible, adding new changing rooms, and installing a new roof. An existing playground will also be replaced and relocated. Alongside these changes, amenities and signage will be installed to establish Kirk Park as a trailhead for the Lakeshore Drive Pathway, US Bike Route, and the Lake Michigan Water Trail.



Playground design for Kirk Park

## Management of Kouw and Windsnest Parks

With the goal of serving our mutual constituents, the Ottawa County Parks and Recreation Commission took on the management of two Port Sheldon Township Lake Michigan beach-front parks in 2023: Kouw Park and Windsnest Park. Port Sheldon Township maintains ownership and oversight of both parks, while the Ottawa County Parks and Recreation Commission is responsible for management and operations.

**“This model of forging partnerships and collaborations to serve residents is consistent with the Parks Commission’s ongoing strategy of leveraging the public investment made by the community.”**

– Jason Shamblin, Director



Kouw Park captured by @2goodspies



Windsnest Park captured by @frommichiganwithloveblog

## Motor Vehicle Permits

Along the lakeshore, Ottawa County Parks adopted an automated method of selling motor vehicle permits by implementing onsite fee stations and new online software for vehicle registration. This adjustment enhanced our operations’ efficiency and streamlined the process.



**55,693** total permits issued in 2023

**38,782** permits purchased at a pay-station

A motor vehicle permit is required Memorial Day weekend through Labor Day at lakeshore parks and the Riverside Park boat launch. The permit system helps us maintain and preserve these areas for everyone to enjoy.





# Grand River Greenway

## Celebrating the Bill Idema Moraine Nature Segment

The Bill Idema Moraine Nature Segment of the Idema Explorers Trail connects Grand Ravines to Grand River County Park with a multi-purpose path along the Grand River. In 2023, the vital link was celebrated during the Grand Explorers' Trail Race, organized by the Ottawa County Parks Foundation.



Participants started at Grand River Park and journeyed to Grand Ravines, discovering the recently completed segment of the Idema Explorers Trail. The event showcased the scenic trail section, which includes floodplain protection and a boardwalk to address the region's high water levels.



Photo by Kellie Hall Photography

## A Grand New Treehouse

The Ottawa County Parks Foundation received an anonymous donation allowing for the completion of the covered treehouse at Grand Ravines.

The treehouse is located adjacent to the Grand Ravines Lodge. The raised structure has boardwalk access and provides another unique way to experience the wooded ravines as a resting point or location for small programs.



The treehouse has become a popular place for family photos!  
Photo by @bloomoutside



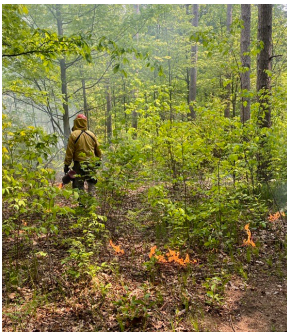
The Treehouse is dedicated to Bea Aldrink Idema in recognition of her love for nature, education, and having fun. The north ravines property is deeply connected to Bea and her family.



# Natural Resource Management

## Prescribed Fires

As part of the long-term land management of Robinson Forest, a prescribed fire was completed on the property in late May. A consultant was contracted to work with Parks staff to ensure a safe and effective burn. This burn was the third conducted by the Parks at this site, with previous fires taking place in 2015 and 2019.



Positive effects have been seen, including the encouragement of desirable fire-loving plant species like wild lupine.

Wild Lupine photo by Mike Lozon.

## Red Pine Management

In early fall, forest management activities were completed on 140 acres of aging red pine plantations at Pigeon Creek. Logging red pine plantations is an investment in Ottawa County's future generations. By clearing out an unsustainable pine plantation that provided minimal wildlife support and would inevitably perish if left alone, we are enabling a native forest to flourish.



Removing this crop plant will allow for a more diverse forest to emerge from the seedbank. Post-removal, this property will be restored to a forest of beech, sugar maples, and hemlock trees.

As this diverse forest grows, it has the potential to bring new species to Pigeon Creek Park, as well as expand habitat for existing ones.



Scarlet tanager photo by Blair Celano

## Restoration Education

Restoration strategies are often intricate and may appear counterintuitive at times. For instance, why would a Parks Department opt to cut down trees? Isn't that bad?

Questions like these are valid and we work hard to answer them in a way that makes sense. Through informative videos, we aim to demystify restoration efforts and highlight the long-term benefits they bring to our natural world.



Learn more: [news.miottawa.org/red-pines](https://news.miottawa.org/red-pines)



## Why Cut Down Trees?

Over time, the pine plantations at Pigeon Creek had been deteriorating due to disease and insufficient biodiversity. Specifically, diplodia tip blight and armillaria root rot, both fungus-related diseases, had a significant impact on the plantations. To ensure park visitor safety, we proactively removed unhealthy sections of the pine plantations.



# Natural Resource Management

## Volunteers

Our volunteers and school groups continued to be crucial to the work that we do. Their tremendous support contributed to making our parks cleaner and more beautiful.

**25** service-based workdays      **22** Adopt-a-Park groups  
**114** volunteer workdays      **7,512** volunteer hours



## Invasive Species Management

Our Stewardship Crew, Park Stewards, staff, and volunteers helped manage invasive species on nearly half of our total acreage.

**35** invasive species treated  
**3,673** acres managed for invasive species

Our team also surveyed and treated for hemlock woolly adelgid (HWA), a harmful insect pest that negatively impacts hemlock trees. Lakeshore parks are of utmost importance to treat due to their location near Lake Michigan, which is a major flyway for migratory birds.

The Stewardship Crew has finished surveys at all lakeshore properties and will progress inland in upcoming surveys and treatments.

**49** acres surveyed for HWA



## Planting Pawpaws at Paw Paw Park



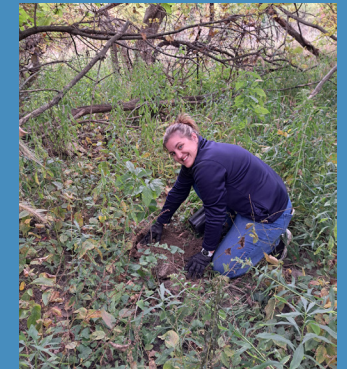
Thanks to a generous donation by Yanfeng through their iCare program, Paw Paw Park finally has its namesake tree!



Pawpaws are tropical-looking understory trees that grow naturally along rivers in Southwest Michigan. While the park currently has only a few newly planted pawpaw trees, it is probable that there were more of them before European settlement. Therefore, we were grateful when Yanfeng offered to purchase and plant 65 pawpaw trees to establish Paw Paw Park as a destination to learn about this unique species.

**“We were excited to work at Paw Paw Park and give back.”**

– Darby Goodemoot, Senior Manager of Costing at YanFeng





# Special Events

## Secchia Gateway Arch Dedication



A celebration took place for the Jenison Mill Segment of the Idema Explorers Trail, linking Ottawa and Kent County, highlighted by the Secchia Gateway Arch. The arch pays tribute to Peter Secchia for his pivotal role in the Grand River Greenway Campaign.

The 1-mile segment connects to a 2-mile trail in Georgetown Township, linking users to over 100 miles of trails in Kent County. As a result, bike and pedestrian trail users in this area can enjoy connections to Millennium Park, downtown Grand Rapids, and the Grand Rapids riverfront.



We are grateful for our long-term partners and collaborators who have helped make this project come to life.

## Public Observatory Grand Opening

Along the Pigeon River Greenway, a grand opening was held for the public observatory at Hemlock Crossing. This project was made possible with support from the Shoreline Amateur Astronomical Association (SAAA), Friends of Ottawa County Parks, the Ottawa County Parks Foundation, and many members of our community.



The facility, which houses a 16-inch Schmidt-Cassegrain telescope, is operated by members of the SAAA.

The SAAA hosts monthly astronomy programs at the Nature Center and public observation nights every Friday (weather permitting).

Learn more: [holland-saaa.org](http://holland-saaa.org)

## David VanGinhoven Trail Dedication

On October 27, a dedication event was held for the David VanGinhoven Memorial Trail located at Hemlock Crossing. The plaque honors David's 11 years of service and dedication to the Ottawa County Parks and Recreation Commission.



**“David was our previous Parks Commission President and also a founding board member of the Ottawa County Parks Foundation. He really gave so much to the community, so a trail was named in his honor at Hemlock Crossing.”**

– Jason Shamblin, Director





# Community Engagement - Grants

## Art in the Parks

In collaboration with the Hope College Arts & Humanities Department and CultureWorks, two free events were held in the Holland/Zeeland area. Both events focused on nature and art. This project was supported by the Mellon Foundation.

**Story Stamping** with Ayanna Njoroge took participants on a scavenger hunt for stamps around Hawthorn Pond. There was an opportunity afterwards to decorate a pot and take home a new plant.

**Chalk, Walk, & Talk** began with a poetry reading by Samuel Vega who shared poems inspired by visits to Ottawa County Parks. Afterwards, chalk was available for people to reflect and write their own poems or draw something inspired by the park.



## Expanding Nature Access

Research demonstrates that kids who spend time outdoors are healthier and do better in school. Our Outdoor Education (OE) programs aim to provide opportunities to introduce and expose all children to outdoor experiences that promote physical and emotional health, civic engagement, and a long-term appreciation for nature.

**5,013** students attended an OE program

### Parks for All Pilot

Funded in part through a grant from the Grand Haven Area Community Foundation, with support from the Ottawa County Parks Foundation, we piloted Parks for All this spring in the Grand Haven, Spring Lake, Allendale, and Coopersville school districts.

**851** students were served in the Parks for All pilot

The curriculum was created with both students and teachers in mind, with care to ensure the program not only met Next Generation Science Standards to help teachers achieve their classroom goals, but also provided a fun and enriching experience for students.

**Efforts are being made to secure funding that allows this program to be offered county-wide!**





# Community Engagement

## Step it Up

The 2023 Step It Up! fitness challenge kicked off in May with support from an Ottawa County Department of Public Health grant.

This free, 8-week walking program is designed to help community members get active, visit new parks, and improve their physical and mental health through outdoor group walks.



**3/4** of participants reported **meeting or exceeding the national health guidelines for weekly physical activity** by the end of the program.

## Velo Kids

Velo Kids and Ottawa County Parks partnered to provide adventure-based bike camps for grades 1-8, which included a special kayaking opportunity.

At select camp sessions, Parks staff spent an hour leading an Ottawa County Parks orientation activity.



## Birdie Big Year

We continued to offer special events to engage our community.

Accomplished birder Tiffany Kersten, who achieved a new Lower 48 Big Year record of 726 species, was a guest speaker at the Nature Center along her birding tour.



## Public Viewing Nights

The observatory was open to the public on Friday evenings throughout the year whenever viewing conditions allowed. A member from the Shoreline Amateur Astronomical Association (SAAA) was present to operate the telescope.

**504** people attended a public astronomy SAAA program

Learn more: [miottawa.org/observatory](http://miottawa.org/observatory)



## Engaging our Community

### Programming

**252** public programs **5,984** participants

**131** private programs **5,881** participants

**29,675** visitors to Nature Center at Hemlock Crossing



### Outreach

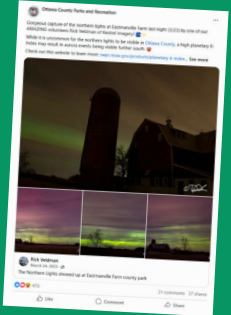
**16,181** Facebook followers

**3,972** Instagram followers

**14,557** Gov-Delivery (GD) subscribers

**60%** engagement rate

**3** park topics in top 10 among GD subscribers



## StoryWalks

We partnered with our local libraries to continue offering StoryWalks. Pages from a featured book were posted on signs along a path for families to read during park hours. Thank you Herrick and Loutit District Library!

**“We went there today! The kids loved it!”**

– StoryWalk Visitor via Social Media





# Maintenance and Operations

## Grose Park

In late 2021, a fire destroyed the maintenance building at Grose Park. The building and its contents were a total loss. The restroom facilities were also severely damaged. Since that time, those responsible for the arson and vandalism have been apprehended.

In 2023, the reconstruction of the maintenance building was finished, along with a major renovation of the restroom facilities. The restrooms are now fully operational and available for visitors to use.

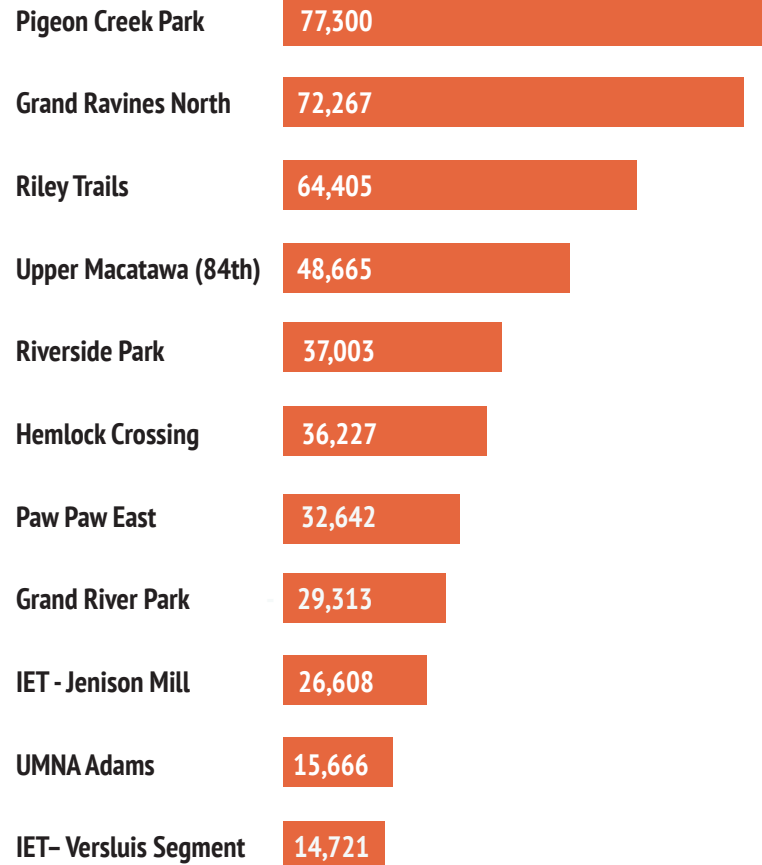
## Seasonal Staff

Hiring seasonal support staff continued to be a challenge in 2023. To address this, seasonal wages were increased in 2024 in an attempt to recruit and retain new seasonal and part-time employees.



## Annual Visitors via TRAFx Car Count

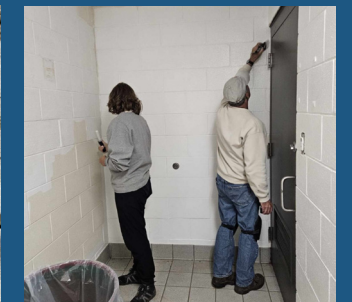
The OCPRC has utilized various methods to gather data about parks usage, including TrafX vehicle and trail counters. While the TrafX counters provide valuable and accurate data about usage trends over time, more work is being done to verify how accurate they are when comparing usage from site to site.



## Our Crew

Our Parks Operations staff takes great pride in making sure all of our parks and facilities are ready for public use. They are responsible for opening gates, servicing equipment, mowing the grass, cleaning facilities, and much more. Their hard work ensures that visitors can enjoy a clean and safe environment while exploring the beauty of our parks.

<b>12</b> full-time staff	<b>88</b> part-time and seasonal staff
<b>1,433</b> facility reservations	<b>186</b> board sections replaced
<b>302</b> downed trees cleared	<b>452</b> signs printed and mounted
<b>38,743</b> hours of part-time labor	





# Supporting Organizations

## Ottawa County Parks Foundation

The Ottawa County Parks Foundation (OCPF) is an independent 501(c)3 non-profit organization formed to benefit the Ottawa County Parks and Recreation Commission. The Foundation relies on private donations and grants to do its work. Thanks to the support of many generous donors, the Ottawa County Parks Foundation enjoyed a successful year.



### Some of the projects funded by the Parks Foundation in 2023:

**Parks for All Pilot:** Thanks to a grant from the Grand Haven Area Community Foundation, the Parks Commission completed its Parks for All pilot. The Parks Foundation provided the matching funds for the grant.

**Grand Ravines Treehouse:** Thanks to a significant gift to the Foundation, the treehouse overlook at Grand Ravines was completed in spring of 2023.

**Program Support:** The Foundation supported health and wellness programs in 2023 that connected over 1,000 people with nature.

**Accessibility:** Through the Foundation's bench program, the Foundation improved accessibility in Ottawa County Parks by providing spaces for those with reduced mobility levels to rest.

**Grand Explorers' Trail Race:** The OCPF hosted the first annual trail race from Grand River County Park to Grand Ravines to help support parks.

Learn more: [ottawacountyparksfoundation.org](https://ottawacountyparksfoundation.org)



Parks Foundation President Anita Yoder speaking at *Breakfast at the Park*

## Friends of Ottawa County Parks

The Friends of Ottawa County Parks (FOOCP) is a membership-based organization that supports the parks through stewardship and monitoring, as well as community outreach.



FOOCP enjoyed a successful Holiday Luminary event which brought joy and light to the community. By attending various community events, they raised awareness and promoted the services offered by Ottawa County Parks. Their dedication to organizing open houses and cleanups highlighted their commitment to not only enriching the parks but also deepening the connection between our community and nature.

Learn more: [friendsofocp.org](https://friendsofocp.org)



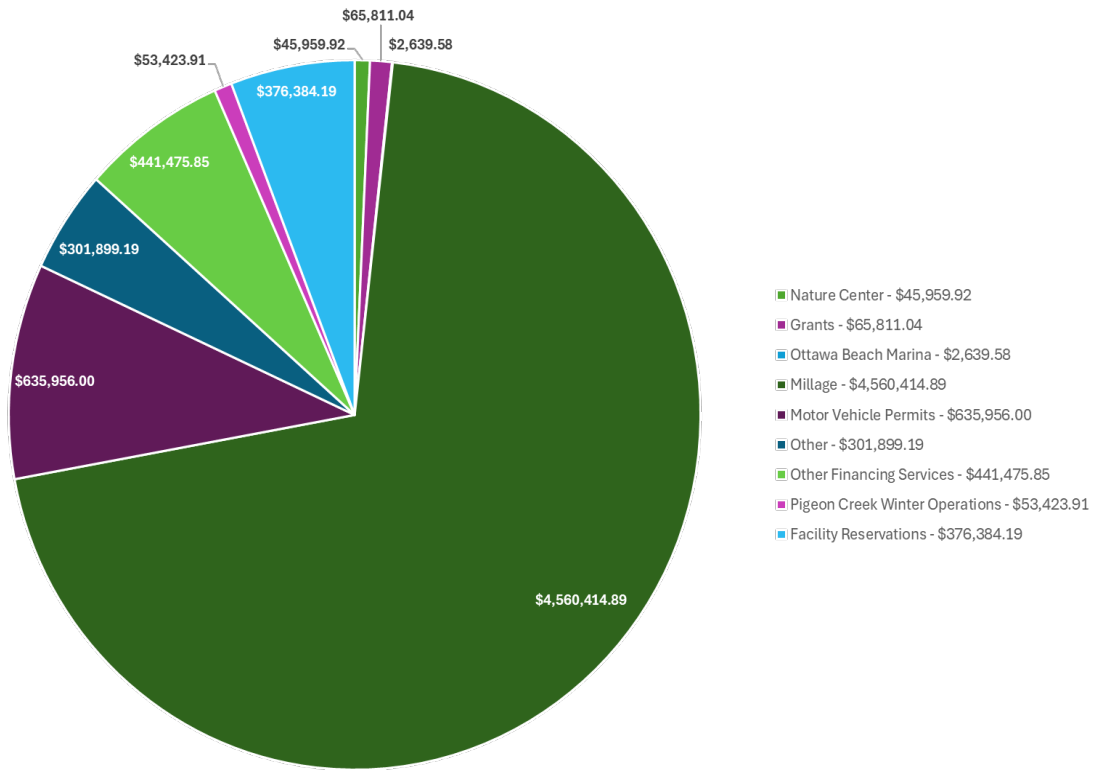
Thanks to the many generous donations made at the Holiday Luminary event, the Friends of Ottawa County Parks were able to donate 166 items to the Holland Boys and Girls Club!



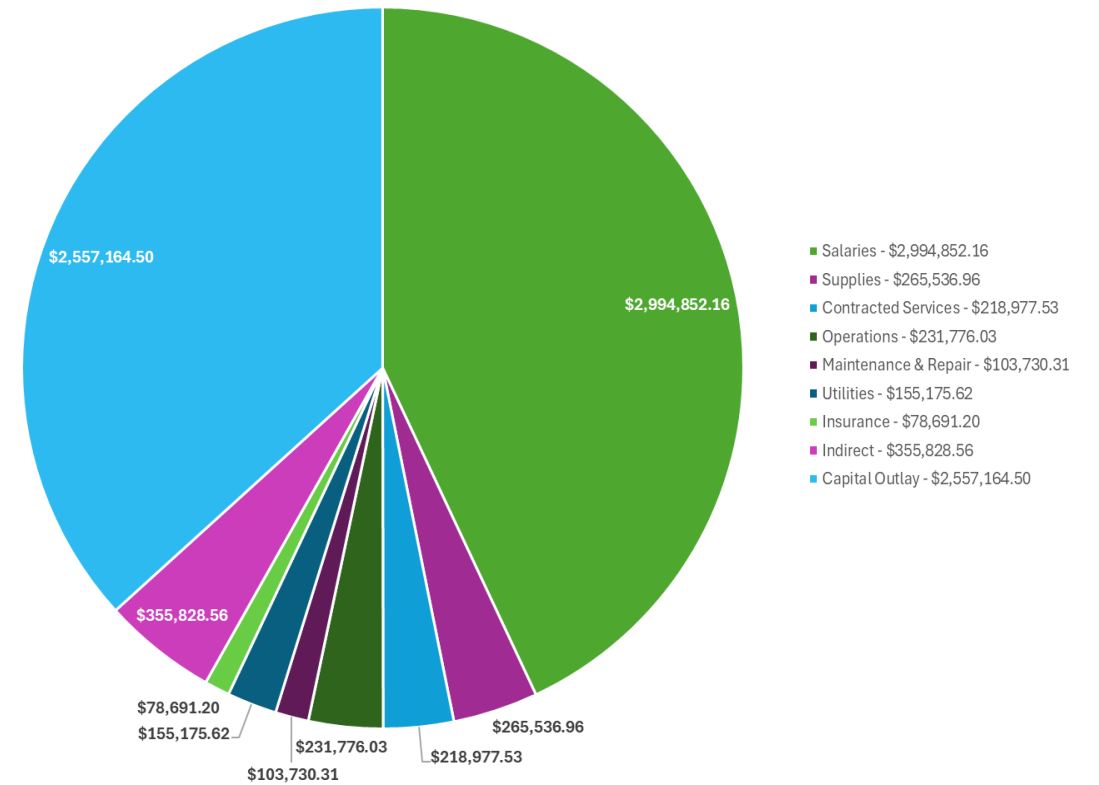


# Revenue & Expenses

FY 2023 Revenue = \$6,483,964.57



FY 2023 Expenses = \$6,961,732.87



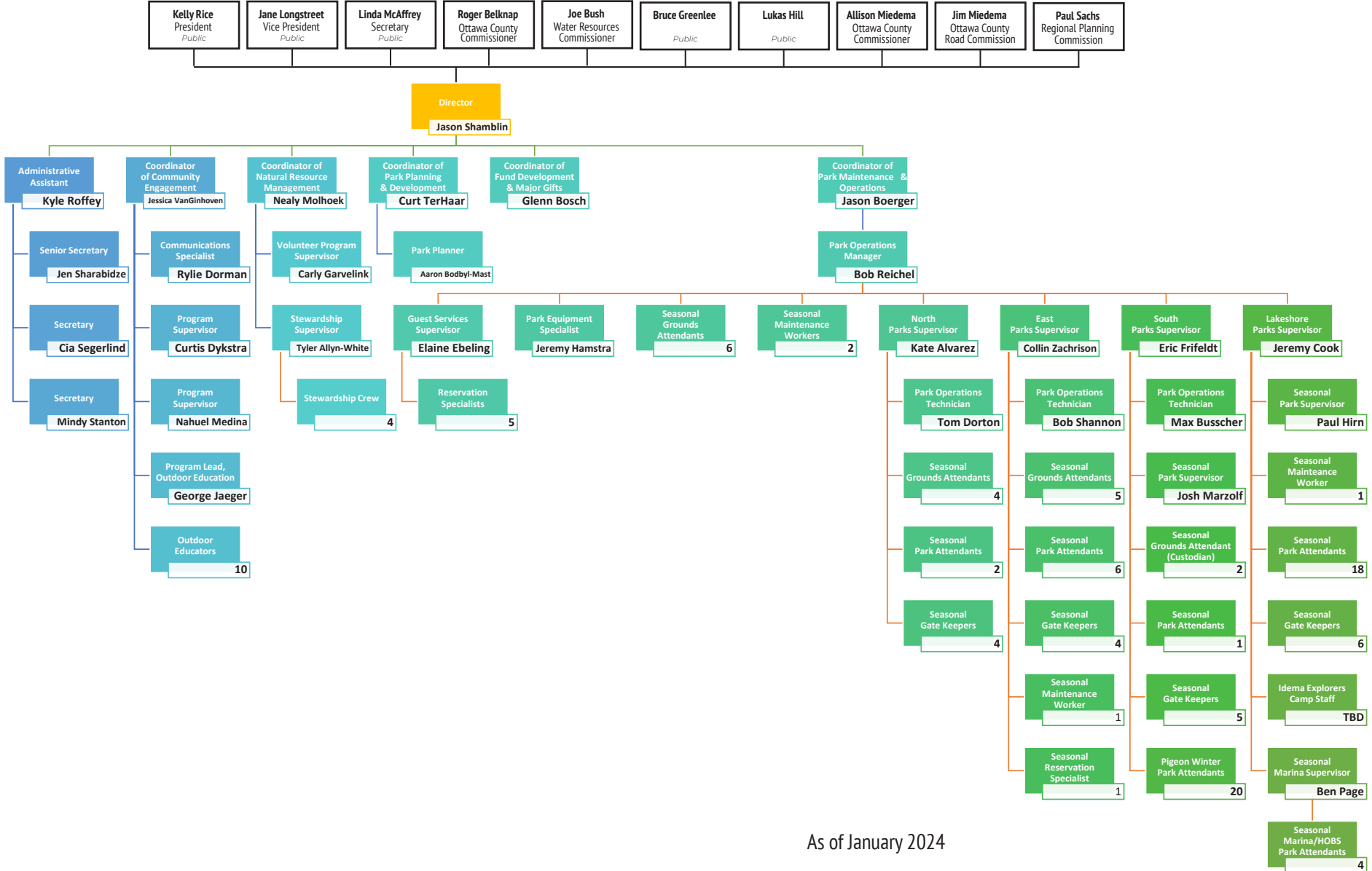
\*Other - Reimbursements, donations, Grand River Greenway, hunting fees, oil revenue, interest on investment

\*\*Other Financing Services - In-kind Admin/IT services from Ottawa County

\*\*\*Indirect - Admin/IT services from Ottawa County + additional IT service charge



# Parks Commission & Staff



As of January 2024



# Property Data

Parks and Open Spaces	Acreeage	Lake Michigan Frontage (feet)	River Frontage (Grand River, Pigeon & Macatawa) (feet)	Bayou & Inland Lake Frontage (feet)
<b>Grand River Greenway</b>				
Stearns Creek	146	0	0	7,730
Connor Bayou	142	0	4,563	1,687
Crockery Creek Natural Area	334	0	2,640	0
Jubb Bayou (Open Space)	97	0	4,589	4,026
Riverside Park	95	0	6,737	0
Bur Oak Landing (Open Space)	263	0	7,392	5,267
Bass River Open Space	47	0	0	0
Eastmanville Farm	229	0	1,365	0
Eastmanville Bayou Open Space	157	0	9,364	8,300
Deer Creek Park	2	0	530	0
Ripps Bayou (Open Space)	173	0	7,550	7,992
Kuits Bayou (Open Space)	80	0	6,191	2,650
Grand River Open Space	279	0	7,890	0
Grand River Ravines	201.92	0	2,640	0
Grand River Park	162	0	2,505	0
Bend Area (Open Space)	421	0	10,032	33,263
Un-named Site - Georgetown Township	30.45	0	1,266.89	0
	<b>2,859.37</b>	<b>0</b>	<b>75,254.89</b>	<b>70,915</b>
<b>Pigeon River Greenway</b>				
Hemlock Crossing/Pine Bend	239	0	7,920	0
Pigeon River	46	0	2,354	0
Pigeon Creek Park	282	0	3,200	0
Pigeon Creek Forest (Open Space)	189	0	0	0
	<b>756</b>	<b>0</b>	<b>13,474</b>	<b>0</b>

Parks and Open Spaces	Acreeage	Lake Michigan Frontage (feet)	River Frontage (Grand River, Pigeon & Macatawa) (feet)	Bayou & Inland Lake Frontage (feet)
<b>Macatawa River Greenway</b>				
Paw Paw Park	172	0	6,878	0
Adams Street Landing	10	0	1,100	0
Hawthorn Pond	40	0	1,792	0
Other Macatawa Propetry	10.16		1,994	
Upper Macatawa Natural Area	612	0	13,100	0
	<b>844.16</b>	<b>0</b>	<b>24,864</b>	<b>0</b>
<b>Lake Michigan Coastal Greenway</b>				
North Ottawa Dunes	593	0	0	0
North Beach Park	7	745	0	0
Rosy Mound Natural Area	164	3,450	0	0
Kirk Park	68	1,850	0	0
Ottawa Sands	345	0	5,740	8,400
Olive Shores	21	738	0	0
Tunnel Park	23	950	0	0
Historic Ottawa Beach Parks	58	756	0	2,560
Kouw Park*	4	155	0	0
Windsnest Park*	12.95	1,231	0	0
	<b>1,295.95</b>	<b>9,875</b>	<b>5,740</b>	<b>10,960</b>
<b>General Parks, Open Space and Trails</b>				
Musketawa Trail	NA	0	0	0
Conklin Trailhead	0	0	0	0
Marne Trailhead	0	0	0	0
Un-named Site - Wright Township	8	0	0	0
Grose Park	45	0	0	823
Marne Bog (Open Space)	83	0	0	0
Robinson Forest (Open Space)	80	0	0	0
Johnson Street Forest (Open Space)	50	0	0	0
Hiawatha Forest (Open Space)	365	0	0	0
Hager Park	104	0	0	0
Port Sheldon Natural Area (Open Space)	440	0	0	0
VanBuren Street Dunes (Open Space)	120	0	0	0
Spring Grove Park	16	0	0	0
Riley Trails	300	0	0	0
	<b>1,611</b>	<b>0</b>	<b>0</b>	<b>823</b>

\*Port Sheldon Township owns Kouw and Windsnest parks. Ottawa County Parks & Recreation has been contracted for management and operations per a management agreement.